









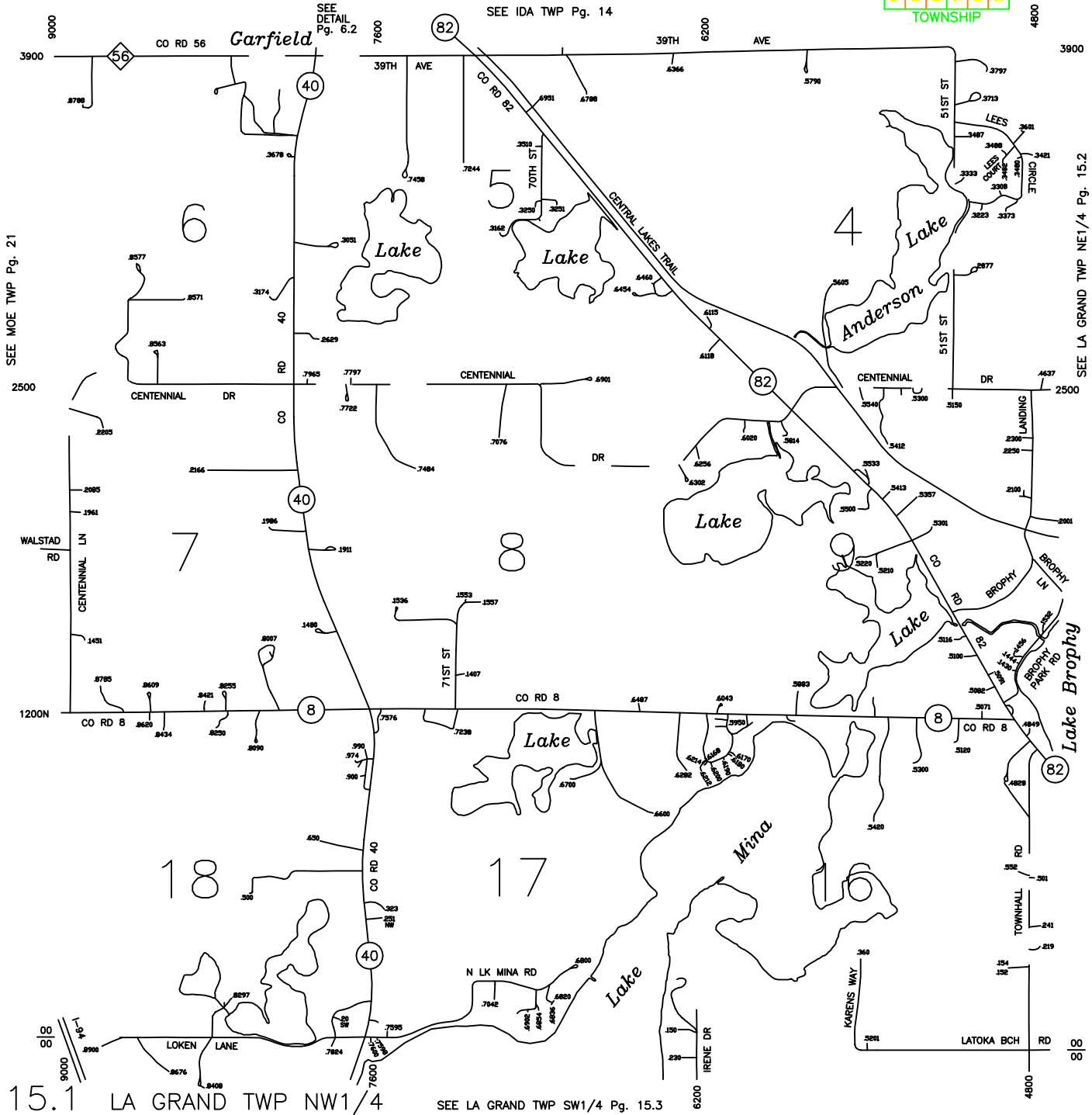
L A G R A N D

T. 128 N. - R. 38 W.

-  INTERSTATE HIGHWAY
 -  STATE HIGHWAY
 -  COUNTY ROAD
 -  TOWNSHIP ROAD
 -  CITY STREETS
 -  PAVED SURFACE
 -  GRAVEL SURFACE
 -  DRIVEWAY
-  INTERSTATE HIGHWAY
 -  STATE HIGHWAY
 -  COUNTY STATE AID HWY
 -  COUNTY ROAD

SURVEY DIVISION, DOUGLAS COUNTY PUBLIC WORKS CENTER
508 3rd AVE. W. P.O. BOX 386
ALBUQUERQUE, MINNESOTA 54308
PHONE: (225) 763-8001
MAY 11, 2003

LA GRAND					
1	2	3	4	5	6
7	8	9	10	11	12
13	14	15	16	17	18
19	20	21	22	23	24
25	26	27	28	29	30
31	32	33	34	35	36
TOWNSHIP					



15.1 LA GRAND TWP NW1/4

SEE LA GRAND TWP SW1/4 Pg. 15.3

SEE MOE TWP Pg. 21

SEE DETAIL Pg. 6.2

SEE IDA TWP Pg. 14

SEE LA GRAND TWP NE1/4 Pg. 15.2